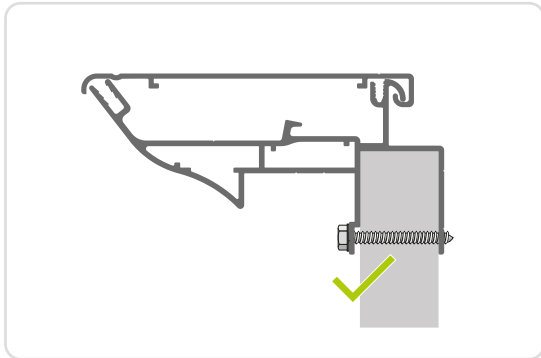


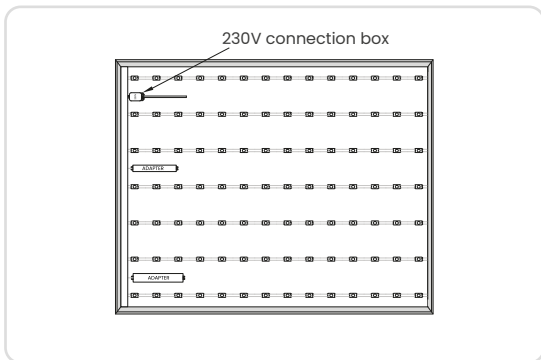
# Installation manual Outdoor Tension Lightbox 140

It is essential that the LED frame is mounted on a flat surface and that a backlit PVC banner is used. Check the power supply location and where it enters the LED frame. Ensure the cable is long enough to reach the connection box.



## 1. Drilling holes in the profile

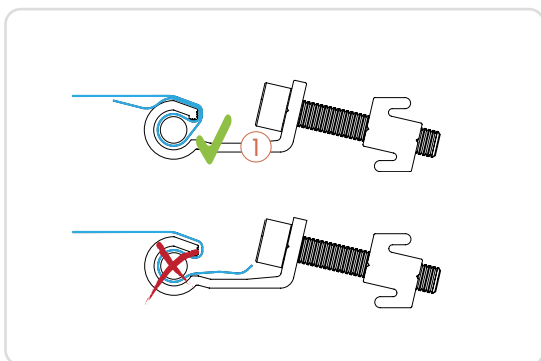
The Outdoor Tension Lightbox 140 profile is delivered without pre-drilled holes. Attach the frame securely to the wall using appropriate fixings for the type of wall you are mounting to. Drill the holes through the mounting channel.



## 2. Mounting the frame and connecting the cable

Mount the frame level onto the wall. Connect the 230V mains power to the connection box inside the LED frame. Before attaching the fabric, check that all LEDs are functioning properly.

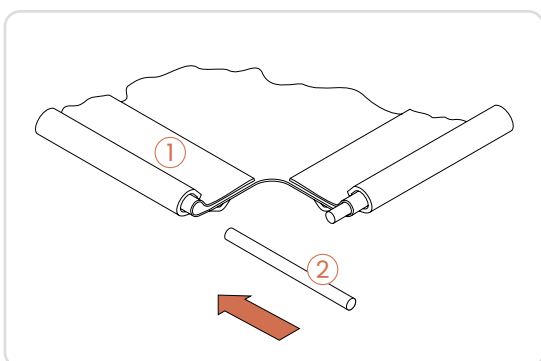
To ensure proper drainage,  $\varnothing 7$  mm drainage holes must be drilled in the bottom profile of the frame.



## 3. Preparing the PVC banner

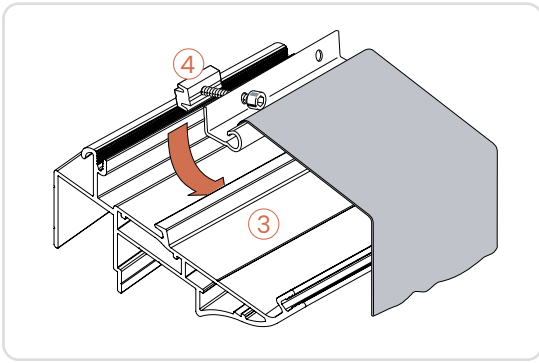
For the correct PVC banner size and corner preparation, please refer to the fabric specifications.

Fold the PVC banner inwards on all sides. Then slide the tensioning profile (1) over the folded edge of the banner, ensuring it is positioned evenly along the entire length.



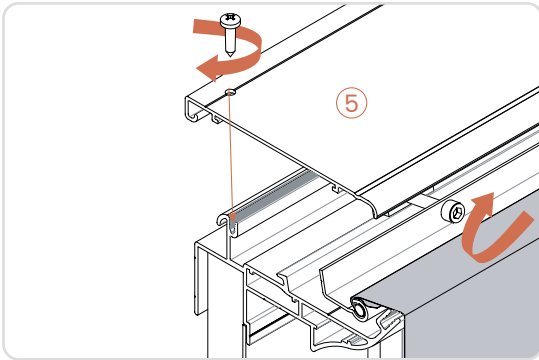
## 4. Inserting the clamping profile

Insert the  $\varnothing 6$  mm aluminium rod (2) into the fold of the banner. To ease insertion, particularly on longer lengths, apply a small amount of liquid soap to the rod if required.



### 5. Attaching the PVC banner to the frame

Turn the banner over and position it on the tensioning profile (3). Fit the clamping bolts and clamping blocks (4) by inserting the bolts through the selected holes in the clamping profile and loosely screwing a clamping block onto each bolt. One turn is sufficient at



### 6. Tensioning the PVC banner

Begin by tensioning the shorter sides of the frame, tightening the banner to around 50% of its final tension. Work from the centre towards the corners. Repeat this process on the longer sides, again working from the centre towards the corners.

To achieve the final tension, fully tighten the shorter sides first, followed by the longer sides. Once the banner is correctly tensioned, fit the cover profiles (5) using the sheet metal screws.

**Please note:** it is not advisable to attach the fabric into the frame when there is too much wind.